

## T2 Mini Series

T2-50 to T2-200 plus T2SS3-16  
and T2SS3-24

Mini Nitrogen Gas Springs



### T2 Mini Product Value

- More Force in Less Space:  
Reduce your die footprint and the number of springs.
- Force Adjustability & Increased Productivity:  
Hyson Gas Springs are adjustable simply by modifying gas through the control panel while the die is in the press. With mechanical springs, the die must be pulled to replace worn or damaged springs, increasing downtime and lessening productivity.
- Balanced, Consistent Force:  
Hyson Gas Springs provide for a balanced pad and high quality parts while, as coil springs start to fatigue and break, the pad can become imbalanced resulting in poor quality parts.

### Product Features

- Complete force adjustability
- Seven models with contact forces from 129 N to 2001 N/29 to 450 lbf, identifiable by color code
- Custom or pre-determined forces available to meet necessary force requirements
- Stroke lengths from 7 mm/.028 in to 125 mm/4.92 in
- Diameters available from 12 mm/0.47 in to 32 mm/1.26 in
- Variety of mounting options available

### Advanced Safety Features

- T2-90, T2-180 and T2-200 have overstroke protection which vents internal gas pressure in a controlled manner, should the product be stroked beyond maximum capacity.



## Product Specifications

Pressure medium .....	Nitrogen
Max. charging pressure .....	180 bar
Operating temperature .....	0° to 80°C
Force increase by temperature .....	±0.3% per °C
Max piston rod velocity .....	1.6m per min.

## Ordering Options

### Mini Springs

<b>T2-XX</b>	X	<b>25</b>	-	<b>Yellow</b>
Model		Stroke (mm)		Color
T2-50		See		Green
T2-70		Dimensional		Blue
T2-90		Information		Red
T2-180		Charts		Yellow
T2-200				Black

All Gas Springs shipped at maximum charge pressure unless otherwise specified.

### Stripper Springs

<b>T2SSX-XX</b>	X	<b>25</b>	-	<b>Thread Size</b>	-	<b>Yellow</b>
Model		Stroke (mm)				Color
T2SS3-16		15-GM		M16 x 1.5		Green
				(Standard)		Blue
T2SS3-16		See		-OR-		Red
T2SS2-24		Dimensional		M16 x 2		Yellow
		Information		(Optional)		Black
		Charts				

All Gas Springs shipped at maximum charge pressure unless otherwise specified.

Gas Spring Model		Page	
T2-50	42	T2-200	50
T2-70	44	T2SS3-16	52
T2-90	46	T2SS2-24	54
T2-180	48		

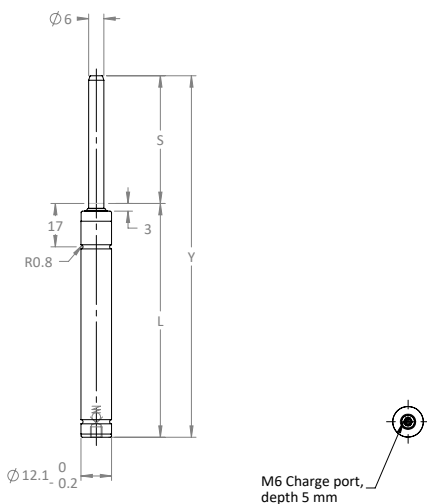
T2-50 green provides full stroke force between 149 N (34 lbf) and 207 N (47 lbf). T2-50 blue provides full stroke force between 299 (67 lbf) and 414 (93 lbf). T2-50 red provides full stroke force between 448 N (101 lbf) and 620 (139 lbf). T2-50 yellow provides full stroke force between 597 N (134 lbf) and 827 (186 lbf).



### Basic Information

For general information see “About Gas Springs”.

Min. charging pressure (at 20°C) .....	20 bar
Max. charging pressure (at 20°C) .....	180 bar
Contact Force at max. pressure (N) .....	500
Contact Force at max. pressure (lbf) .....	112
Recommended max strokes/min (at 20°C) .....	~ 40-100
Cylinder diameter (mm) .....	12
Charge port .....	M6
Repair kit .....	Non-repairable
Operating temperature .....	0 to +80°C
Max piston rod velocity .....	1.6 m/s
Force increase by temperature .....	±0.3%/°C
Pressure medium .....	Nitrogen



Order Number	Stroke		Full Stroke Force								Cylinder Height		Body Height		Weight	
			Green		Blue		Red		Yellow		Y ±0.25	Y ±.010	L			
	mm	in	N	lbf.	N	lbf.	N	lbf.	N	lbf.	mm	in	mm	in	kg	lb
T2-50X7	7.0	0.28	149	34	299	67	448	101	597	134	56.0	2.20	49.0	1.93	0.03	0.07
T2-50X10	10.0	0.39	158	36	317	71	475	107	634	143	62.0	2.44	52.0	2.05	0.03	0.07
T2-50X13	12.7	0.50	164	37	329	74	493	111	657	148	67.4	2.65	54.7	2.15	0.03	0.07
T2-50X15	15.0	0.59	168	38	335	75	503	113	670	151	72.0	2.83	57.0	2.24	0.03	0.07
T2-50X19	19.0	0.75	172	39	344	77	517	116	689	155	80.0	3.15	61.0	2.40	0.04	0.09
T2-50X25	25.0	0.98	177	40	354	80	530	119	707	159	92.0	3.62	67.0	2.64	0.04	0.09
T2-50X38	38.1	1.50	183	41	365	82	548	123	730	164	118.0	4.65	80.0	3.15	0.05	0.11
T2-50X50	50.0	1.97	185	42	371	83	556	125	742	167	142.0	5.59	92.0	3.62	0.05	0.11
T2-50X63	63.5	2.50	197	44	395	89	592	133	789	178	172.0	6.77	108.5	4.27	0.06	0.13
T2-50X75	75.0	2.95	197	44	394	89	591	133	788	178	195.0	7.68	120.0	4.72	0.07	0.15
T2-50X80	80.0	3.15	207	47	414	93	620	139	827	186	205.0	8.07	125.0	4.80	0.07	0.15
T2-50X100	100.0	3.94	204	46	409	92	613	138	817	184	245.0	9.65	145.0	5.71	0.08	0.18
T2-50X125	125.0	4.92	202	45	405	91	607	137	810	182	295.0	11.61	170.0	6.69	0.09	0.20



T2-50 Force					
Model	Color	Contact Force		Charge Pressure	
		N	lbf	bar	psi
T2-50	Green	130	29	45	650
T2-50	Blue	250	56	90	1,305
T2-50	Red	380	85	135	1,960
T2-50	Yellow	500	112	180	2,610
T2-50**	Black*	60-500	13-112	20-180	290-2,610

\* Custom pressure. Please specify charging pressure or contact force required.

\*\* Force to be set by the end user. Delivered with a pre-charge of 5-10 bar.

## Mounting Possibilities



Top mount  
FCR

## Recommended Flanges



FCR-50



### Note!

For dimensions on all mounting flanges, refer to “Flanges” in chapter 3.

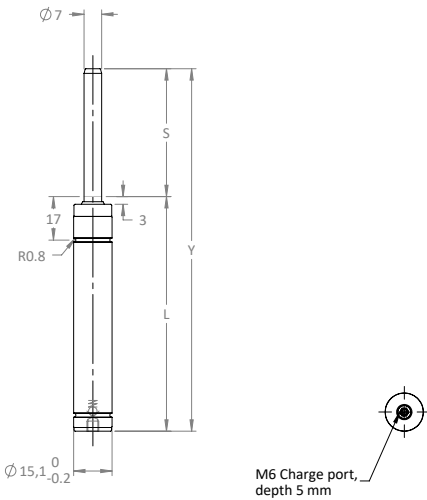
T2-70 green provides full stroke force between 216 N (49 lbf) and 273 N (61 lbf). T2-70 blue provides full stroke force between 432 (97 lbf) and 546 (123 lbf). T2-70 red provides full stroke force between 648 N (146 lbf) and 819 (184 lbf). T2-70 yellow provides full stroke force between 865 N (195 lbf) and 1,092 (246 lbf). Delivered with a pre-charge of 5-10 bar.



### Basic Information

For general information see “About Gas Springs”.

Min. charging pressure (at 20°C) .....	20 bar
Max. charging pressure (at 20°C) .....	180 bar
Contact Force at max. pressure (N) .....	700
Contact Force at max. pressure (lbf) .....	160
Recommended max strokes/min (at 20°C) .....	~ 100-150
Cylinder diameter (mm) .....	15
Charge port .....	M6
Repair kit .....	Non-repairable
Operating temperature .....	0 to +80°C
Max piston rod velocity .....	1.6 m/s
Force increase by temperature .....	±0.3%/°C
Pressure medium .....	Nitrogen



Order Number	Stroke		Full Stroke Force								Cylinder Height		Body Height		Weight	
	S		Green		Blue		Red		Yellow		Y ±0.25	Y ±.010	L			
	mm	in	N	lbf.	N	lbf.	N	lbf.	N	lbf.	mm	in	mm	in	kg	lb
T2-70X7	7.0	0.28	216	49	432	97	648	146	865	195	56.0	2.20	49.0	1.93	0.05	0.11
T2-70X10	10.0	0.39	224	50	447	101	671	151	895	201	62.0	2.44	52.0	2.05	0.05	0.11
T2-70X13	12.7	0.50	228	51	457	103	685	154	914	206	68.0	2.68	55.0	2.17	0.05	0.11
T2-70X15	15.0	0.59	232	52	463	104	695	156	927	209	72.0	2.83	57.0	2.24	0.05	0.11
T2-70X19	19.0	0.75	236	53	471	106	707	159	943	212	80.0	3.15	61.0	2.40	0.06	0.13
T2-70X25	25.0	0.98	240	54	480	108	720	162	961	216	92.0	3.62	67.0	2.64	0.06	0.13
T2-70X38	38.1	1.50	258	58	516	116	774	174	1,032	232	118.2	4.65	80.1	3.15	0.07	0.15
T2-70X50	50.0	1.97	258	58	516	116	774	174	1,033	232	142.0	5.59	92.0	3.62	0.08	0.18
T2-70X63	63.5	2.50	273	61	546	123	819	184	1,092	246	172.0	6.77	108.5	4.27	0.09	0.20
T2-70X75	75.0	2.95	270	61	541	122	811	182	1,082	243	195.0	7.68	120.0	4.72	0.10	0.22
T2-70X80	80.0	3.15	270	61	539	121	809	182	1,079	243	205.0	8.07	125.0	4.92	0.11	0.24
T2-70X100	100.0	3.94	267	60	534	120	802	180	1,069	240	245.0	9.65	145.0	5.71	0.12	0.26
T2-70X125	125.0	4.92	265	60	531	119	796	179	1,062	239	295.0	11.61	170.0	6.69	0.14	0.31



T2-70 Force					
Model	Color	Contact Force		Charge Pressure	
		N	lbf	bar	psi
T2-70	Green	180	40	45	650
T2-70	Blue	350	80	90	1,305
T2-70	Red	500	115	135	1,960
T2-70	Yellow	700	160	180	2,610
T2-70**	Black*	80-700	18-160	20-180	290-2,610

\* Custom pressure. Please specify charging pressure or contact force required.

\*\* Force to be set by the end user. Delivered with a pre-charge of 5-10 bar.

## Mounting Possibilities



Top mount  
FCR

## Recommended Flanges



FCR-70



### Note!

For dimensions on all mounting flanges, refer to “Flanges” in chapter 3.

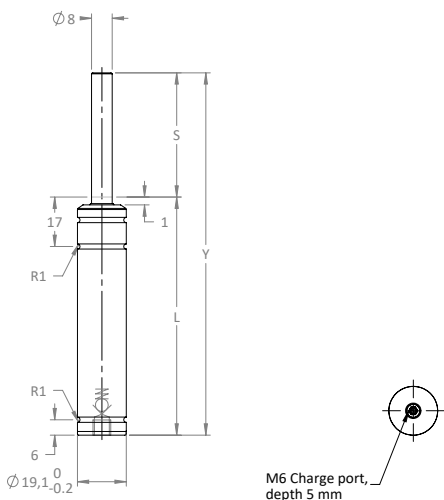
T2-90 green provides full stroke force between 410 N (92 lbf) and 530 N (119 lbf). T2-90 blue provides full stroke force between 670 (152 lbf) and 880 (199 lbf). T2-90 red provides full stroke force between 940 N (213 lbf) and 1,200 (270 lbf). T2-90 yellow provides full stroke force between 1,200 N (270 lbf) and 1,600 (360 lbf). Delivered with a pre-charge of 5-10 bar.



### Basic Information

For general information see “About Gas Springs”.

Min. charging pressure (at 20°C) .....	25 bar
Max. charging pressure (at 20°C) .....	180 bar
Contact Force at max. pressure (N) .....	900
Contact Force at max. pressure (lbf) .....	202
Recommended max strokes/min (at 20°C) .....	~ 100-150
Cylinder diameter (mm) .....	19
Charge port .....	M6
Repair kit .....	Non-repairable
Operating temperature .....	0 to +80°C
Max piston rod velocity .....	1.6 m/s
Force increase by temperature .....	±0.3%/°C
Pressure medium .....	Nitrogen



Order Number	Stroke		Full Stroke Force								Cylinder Height		Body Height		Weight	
			Green		Blue		Red		Yellow		Y ±0.25	Y ±.010	L			
	mm	in	N	lbf.	N	lbf.	N	lbf.	N	lbf.	mm	in	mm	in	kg	lb
T2-90X7	7.0	0.28	530	119	880	199	1,200	270	1,600	360	56.0	2.20	49.0	1.93	0.07	0.15
T2-90X10	10.0	0.39	470	105	780	175	1,100	247	1,400	315	62.0	2.44	52.0	2.05	0.08	0.18
T2-90X15	15.0	0.59	440	99	730	164	1,000	225	1,300	292	72.0	2.83	57.0	2.24	0.08	0.18
T2-90X25	25.0	0.98	420	94	700	157	980	220	1,300	292	92.0	3.62	67.0	2.64	0.08	0.18
T2-90X38	38.1	1.50	410	92	690	155	970	218	1,200	270	118.2	4.65	80.1	3.15	0.10	0.22
T2-90X50	50.0	1.97	410	92	680	154	960	216	1,200	279	142.0	5.59	92.0	3.62	0.12	0.26
T2-90X63*	63.5	2.50	410	92	680	154	950	215	1,200	270	172.0	6.77	108.5	4.27	0.13	0.29
T2-90X80	80.0	3.15	410	92	680	154	950	215	1,200	270	205.0	8.07	125.0	4.92	0.14	0.31
T2-90X100	100.0	3.94	410	92	670	152	940	213	1,200	270	245.0	9.65	145.0	5.71	0.17	0.37
T2-90X125	125.0	4.92	410	92	670	152	940	213	1,200	270	295.0	11.61	170.0	6.69	0.20	0.44



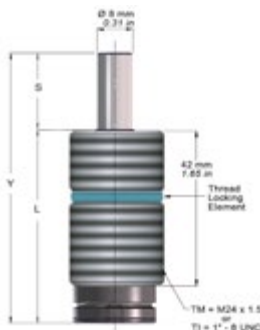
T2-90 Force					
Model	Color	Contact Force		Charge Pressure	
		N	lbf	bar	psi
T2-90	Green	300	67	60	870
T2-90	Blue	500	112	100	1,450
T2-90	Red	700	157	140	2,030
T2-90	Yellow	900	202	180	2,610
T2-90**	Black*	125-900	67-202	25-180	260-2,610

\* Custom pressure. Please specify charging pressure or contact force required.

\*\* Force to be set by the end user. Delivered with a pre-charge of 5-10 bar.

### Installation Tool for Threaded Sleeve

Order No. 3020618



### Mounting Possibilities



Top mount  
FCR, FCR ISO



Foot mount  
FM  
only to be used for  
strokes 7-25 mm

### Recommended Flanges



FM-90



232



FCR-19 VD12



236



FCR-90



236

### Note!

For dimensions on all mounting flanges, refer to "Flanges" in chapter 3.

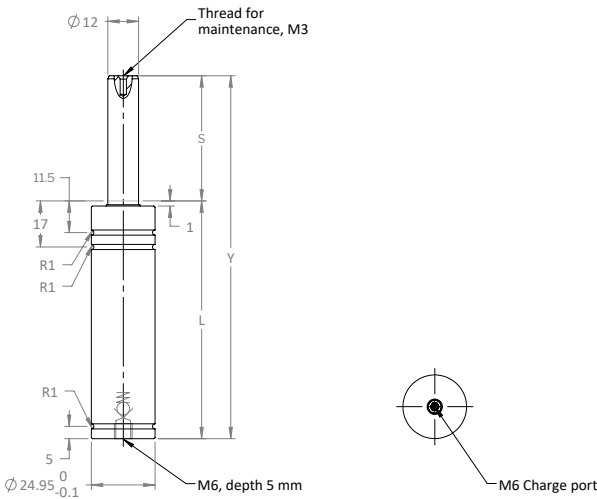
T2-180 offers multiple full stroke force options, green, blue, red, yellow and black (custom). Green provides full stroke force between 760 N (171 lbf) and 770 N (173 lbf). T2-180; Blue provides full stroke force between 1,520 (342 lbf) and 1,540 (346 lbf); Red provides full stroke force between 2,270 N (511 lbf) and 2,320 (522 lbf). Yellow provides full stroke force between 3,020 N (679 lbf) and 3,090 (695 lbf).



### Basic Information

For general information see “About Gas Springs”.

- Min. charging pressure (at 20°C) ..... 25 bar
- Max. charging pressure (at 20°C) ..... 180 bar
- Contact Force at max. pressure (N) ..... 2000
- Contact Force at max. pressure (lbf) ..... 450
- Recommended max strokes/min (at 20°C) ..... ~ 80-100
- Cylinder diameter (mm) ..... 25
- Charge port ..... M6
- Repair kit ..... 3116385
- Operating temperature ..... 0 to +80°C
- Max piston rod velocity ..... 1.6 m/s
- Force increase by temperature ..... ±0.3%/°C
- Pressure medium ..... Nitrogen



Order Number	Stroke		Full Stroke Force								Cylinder Height		Body Height		Weight	
			Green		Blue		Red		Yellow		Y ±0.25	Y ±0.010	L			
	mm	in	N	lbf.	N	lbf.	N	lbf.	N	lbf.	mm	in	mm	in	kg	lb
T2-180X10	10.0	0.39	770	173	1,530	344	2,300	517	3,060	689	62.0	2.44	52.0	2.05	0.14	0.31
T2-180X12.7	12.7	0.50	770	173	1,530	344	2,300	517	3,070	690	67.4	2.65	54.7	2.15	0.15	0.33
T2-180X15	15.0	0.59	770	173	1,540	346	2,310	520	3,070	690	72.0	2.83	57.0	2.24	0.16	0.35
T2-180X16	16.0	0.63	770	173	1,540	346	2,310	520	3,070	690	74.0	2.91	58.0	2.28	0.16	0.35
T2-180X25	25.0	0.98	770	173	1,540	346	2,310	520	3,080	692	92.0	3.62	67.0	2.64	0.18	0.40
T2-180X38	38.1	1.50	770	173	1,540	346	2,320	522	3,090	695	118.2	4.65	80.1	3.15	0.20	0.44
T2-180X50	50.0	1.97	770	173	1,540	346	2,320	522	3,090	695	142.0	5.59	92.0	3.62	0.22	0.49
T2-180X63	63.5	2.50	760	171	1,520	342	2,270	511	3,020	679	172.0	6.77	108.5	4.27	0.26	0.57
T2-180X80	80.0	3.15	760	171	1,520	342	2,280	513	3,040	683	205.0	8.07	122.0	4.80	0.30	0.66
T2-180X100	100.0	3.94	760	171	1,520	342	2,290	515	3,050	686	245.0	9.65	142.0	5.59	0.33	0.73
T2-180X125	125	4.92	760	171	1,530	344	2,290	515	3,060	689	295	11.61	170	6.69	0.39	0.86



T2-180 Force					
Model	Color	Contact Force		Charge Pressure	
		N	lbf	bar	psi
T2-180	Green	500	112	45	655
T2-180	Blue	1,000	225	90	1,305
T2-180	Red	1,500	340	135	1,960
T2-180	Yellow	2,000	450	180	2,610
T2-180**	Black*	280-2,000	112-450	25-180	365-2,610

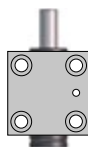
\* Custom pressure. Please specify charging pressure or contact force required.

\*\* Force to be set by the end user. Delivered with a pre-charge of 5-10 bar.

## Mounting Possibilities



Top mount FC,  
FCR, FCR ISO



Body mount  
SM

## Recommended Flanges



FC-180



FCR-25



FCR-180



## Additional Flanges



FCN-150



SM-180



### Note!

For dimensions on all mounting flanges, refer to “Flanges” in chapter 3.

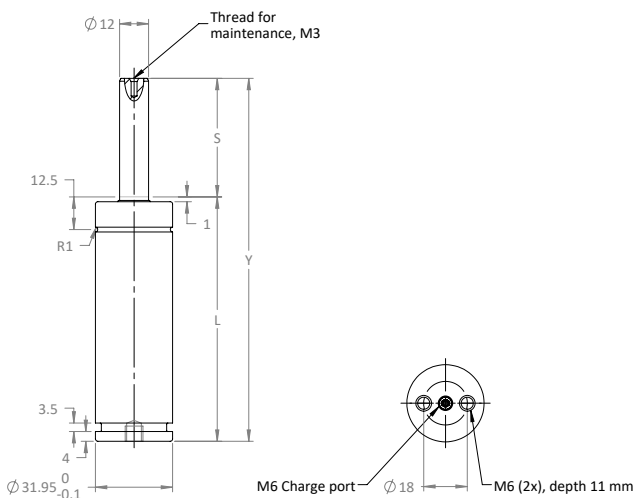
T2-200 [red] is available at full stroke force between 2,270 (510 lbf) and 2,310 (519 lbf). Custom pressure [black] is also available.



### Basic Information

For general information see “About Gas Springs”.

Min. charging pressure (at 20°C) .....	25 bar
Max. charging pressure (at 20°C) .....	180 bar
Contact Force at max. pressure (N) .....	2000
Contact Force at max. pressure (lbf) .....	450
Recommended max strokes/min (at 20°C) .....	~ 80-100
Cylinder diameter (mm) .....	32
Charge port .....	M6
Repair kit .....	3116385
Operating temperature .....	0 to +80°C
Max piston rod velocity .....	1.6 m/s
Force increase by temperature .....	±0.3%/°C
Pressure medium .....	Nitrogen



Order Number	Stroke		Full Stroke Force		Cylinder Height		Body Height		Weight	
	S		Red		Y ±0.25	Y ±.010	L			
	mm	in	N	lbf.	mm	in	mm	in	kg	lb
T2-200X10	10.0	0.39	2,300	517	70.0	2.76	60.0	2.36	0.30	0.66
T2-200X12.7	12.7	0.50	2,300	517	75.4	2.97	62.7	2.47	0.31	0.68
T2-200X16	16.0	0.63	2,310	519	82.0	3.23	66.0	2.60	0.33	0.73
T2-200X25	25.0	0.98	2,310	519	100.0	3.94	75.0	2.95	0.38	0.84
T2-200X38.1	38.1	1.50	2,320	522	126.2	4.97	88.1	3.47	0.43	0.95
T2-200X50	50.0	1.97	2,320	522	150.0	5.91	100.0	3.94	0.48	1.06
T2-200X63.5	63.5	2.50	2,270	510	177.0	6.97	113.5	4.47	0.54	1.19
T2-200X80	80.0	3.15	2,280	513	210.0	8.27	130.0	5.12	0.62	1.37
T2-200X100	100.0	3.94	2,290	515	250.0	9.84	150.0	5.91	0.71	1.57
T2-200X125	125.0	4.92	2,290	515	300.0	11.81	175.0	6.89	0.83	1.83



T2-200 Force					
Model	Color	Contact Force		Charge Pressure	
		N	lbf	bar	psi
T2-200	Red	1,500	340	135	1,960
T2-200**	Black*	280-2,000	63-450	25-180	290-2,610

\* Custom pressure. Please specify charging pressure or contact force required.

\*\* Force to be set by the end user. Delivered with a pre-charge of 5-10 bar.

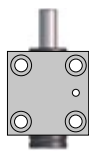
## Mounting Possibilities



Top mount  
FC, FCS



Foot mount  
FFC



Body mount  
HMF, S

## Recommended Flanges



FC-350

235



FCS-32

238



FFC-350

240



HMF-150

243



S-200

248

### Note!

For dimensions on all mounting flanges, refer to “Flanges” in chapter 3.

T2SS3-16 green provides full stroke force of 91 N (20 lbf). T2SS3-16 blue provides full stroke force 180 N (40 lbf). T2SS3-16 red provides full stroke force 335 N (75 lbf). T2SS3-16 yellow provides full stroke force 670 N (150 lbf). Force needs to be set by end user. Delivered with a pre-change of 5-10 bar.

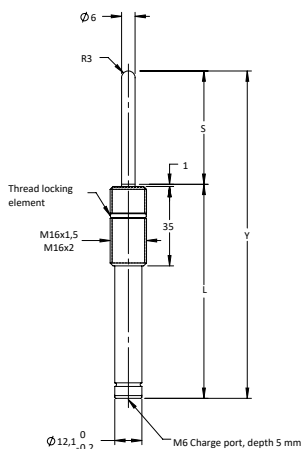
Available mounting option - Lock Nut Retained Mount



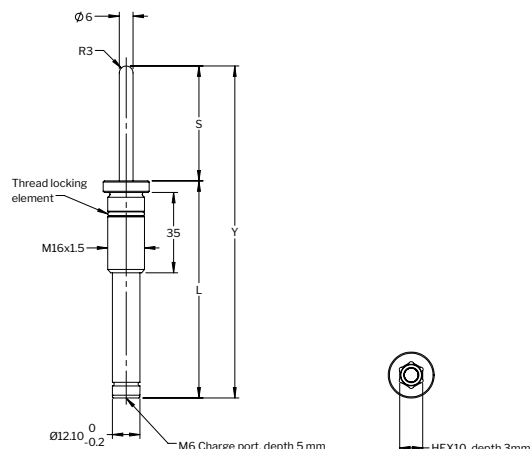
### Basic Information

For general information see “About Gas Springs”.

Min. charging pressure (at 20°C) .....	10 bar
Max. charging pressure (at 20°C) .....	150 bar
Contact Force at max. pressure (N) .....	420
Contact Force at max. pressure (lbf) .....	95
Recommended max strokes/min (at 20°C) .....	~ 100
Cylinder diameter (mm) .....	16
Charge port .....	M6
Repair kit .....	Non-repairable
Operating temperature .....	0 to +80°C
Max piston rod velocity .....	1.6 m/s
Force increase by temperature .....	±0.3%/°C
Pressure medium .....	Nitrogen



T2SS3-16



T2SS3-16-GM

Order Number	Stroke		Full Stroke Force								Cylinder Height		Body Height		Weight	
	S		Green		Blue		Red		Yellow		Y ±0.25	Y ±.010	L			
	mm	in	N	lbf.	N	lbf.	N	lbf.	N	lbf.	mm	in	mm	in	kg	lb
T2SS3-16X1.5X10	10.0	0.39									65.0	2.56	55.0	2.17	0.06	0.13
T2SS3-16X15-GM <sup>1</sup>	15.0	0.59									75.0	2.95	60.0	2.36	0.06	0.13
T2SS3-16X1.5X20	20.0	0.79									85.0	3.35	65.0	2.56	0.07	0.15
T2SS3-16X1.5X30	30.0	1.18									105.0	4.13	75.0	2.95	0.07	0.15
T2SS3-16X1.5X40	40.0	1.57									125.0	4.92	85.0	3.35	0.08	0.18
T2SS3-16X1.5X50	50.0	1.97	91	20	180	40	335	75	670	150	145.0	5.71	95.0	3.74	0.08	0.18
T2SS3-16X1.5X60	60.0	2.36									165.0	6.50	105.0	4.13	0.09	0.20
T2SS3-16X1.5X70	70.0	2.76									185.0	7.28	115.0	4.53	0.10	0.22
T2SS3-16X1.5X80	80.0	3.15									205.0	8.07	125.0	4.92	0.11	0.24
T2SS3-16X1.5X100	100.0	3.94									245.0	9.65	145.0	5.71	0.11	0.24
T2SS3-16X1.5X125	125.0	4.92									295.0	11.61	170.0	6.69	0.13	0.29

<sup>1</sup> Additional stroke lengths available.



T2SS3 Force					
Model	Color	Contact Force		Charge Pressure	
		N	lbf	bar	psi
T2SS3-16	Green	57	13	20	290
T2SS3-16	Blue	110	25	40	580
T2SS3-16	Red	210	47	75	1,090
T2SS3-16	Yellow	420	95	150	2,175
T2SS3-16**	Black*	40-420	9-95	20-150	290-2,175

- \* Custom pressure. Please specify charging pressure or contact force required.
- \*\* Force to be set by the end user. Delivered with a pre-charge of 5-10 bar.



**Installation Tool for T2SS3-16X15-GM**  
Order Number T2SS16-IT

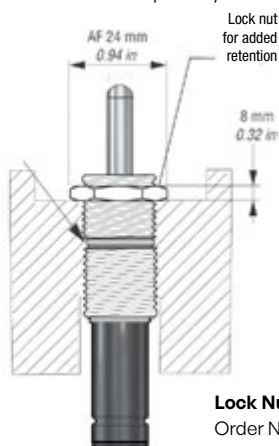
## Mounting Possibilities



Thread mount

### Note

Lock nut is sold separately.



### Lock Nut Retained Mount

Order Number 503681 for M16 x 1.5  
503722 for M16 x 2

### Note!

For dimensions on all mounting flanges, refer to "Flanges" in chapter 3.

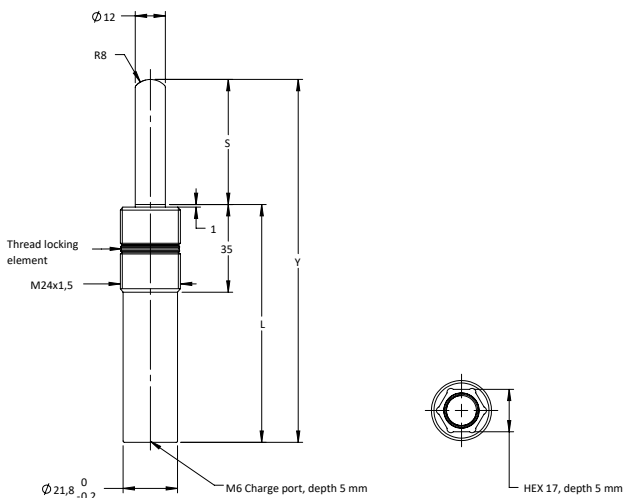
T2SS3-24 green provides full stroke force of 390 N (90 lbf). T2SS3-24 blue provides full stroke force 800 N (180 lbf). T2SS3-24 red provides full stroke force 1,500 N (340 lbf). T2SS3-24 yellow provides full stroke force 2,900 N (650 lbf). Force needs to be set by end user. Delivered with a pre-charge of 5-10 bar.



### Basic Information

For general information see “About Gas Springs”.

Min. charging pressure (at 20°C) .....	10 bar
Max. charging pressure (at 20°C) .....	150 bar
Contact Force at max. pressure (N) .....	1700
Contact Force at max. pressure (lbf) .....	382
Recommended max strokes/min (at 20°C) .....	~ 30-80
Cylinder diameter (mm) .....	24
Charge port .....	M6
Repair kit .....	Non-repairable
Operating temperature .....	0 to +80°C
Max piston rod velocity .....	1.6 m/s
Force increase by temperature .....	±0.3%/°C
Pressure medium .....	Nitrogen



Order Number	Stroke		Full Stroke Force							Cylinder Height		Body Height		Weight		
			Green		Blue		Red		Yellow		Y ±0.25	Y ±.010	L			
	mm	in	N	lbf.	N	lbf.	N	lbf.	N	lbf.	mm	in	mm	in	kg	lb
T2SS2-24X10	10.0	0.39	390	90	800	180	1,500	340	2,900	650	65.0	2.56	55	2.17	0.14	0.31
T2SS2-24X20	20.0	0.79									85.0	3.35	65	2.56	0.15	0.33
T2SS2-24X30	30.0	1.18									105.0	4.13	75	2.95	0.17	0.37
T2SS2-24X40	40.0	1.57									125.0	4.92	85	3.35	0.19	0.42
T2SS2-24X50	50.0	1.97									145.0	5.71	95	3.74	0.21	0.46
T2SS2-24X60	60.0	2.36									165.0	6.50	105	4.13	0.23	0.51
T2SS2-24X70	70.0	2.76									185.0	7.28	115	4.53	0.25	0.55
T2SS2-24X80	80.0	3.15									205.0	8.07	125	4.92	0.27	0.60
T2SS2-24X100	100.0	0 3.94									245.0	9.65	145	5.71	0.31	0.68
T2SS2-24X125	125.0	0 4.92									295.0	11.61	170	6.69	0.35	0.77

<sup>1</sup> Additional stroke lengths available.



T2SS2 Force					
Model	Color	Contact Force		Charge Pressure	
		N	lbf	bar	psi
T2SS2-24	Green	230	52	20	290
T2SS2-24	Blue	450	101	40	580
T2SS2-24	Red	850	191	75	1,090
T2SS2-24	Yellow	1,700	382	150	2,175
T2SS3-16**	Black*	65-1,700	52-382	6-150	290-2,175

- \* Custom pressure. Please specify charging pressure or contact force required.
- \*\* Force to be set by the end user. Delivered with a pre-charge of 5-10 bar.



**Installation Tool for T2SS3-16 and T2SS2-24**  
Order Number 3021000

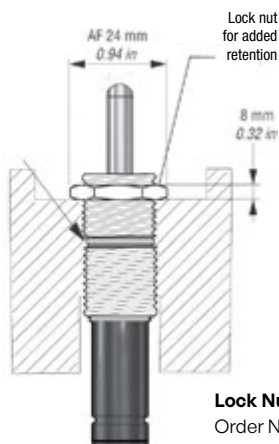
## Mounting Possibilities



Thread mount

### Note

Lock nut is sold separately.



**Lock Nut Retained Mount**  
Order Number 503928

### Note!

For dimensions on all mounting flanges, refer to "Flanges" in chapter 3.